



PRESSES

MECHANICAL • HYDRAULIC • SERVO

Straight Sided Hydraulic Presses

HSG Series

250T - 2500T



Safeties conform to:
CE (EN-16092 : 2018)
OSHA 1910.217
CSA-Z142
NR-12

ISO 9001:2015
ISO 14001:2015
OHSAS 18001 :2007

Presses for Versatile Application

Energy Efficient Servo Hydraulics • Higher Productivity thru High Speed • Sustained Accuracies

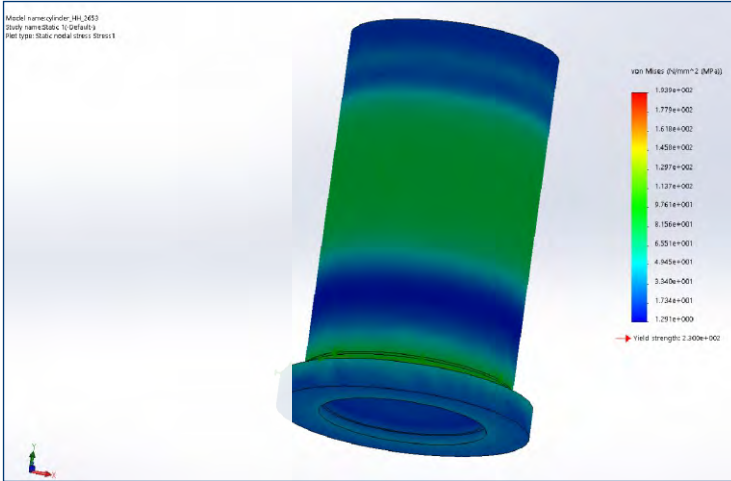
Accurate Stampings & Enhanced Die Life



HSG series Presses are suitable for diversified applications like Deep Draw, Forming, Hot Stamping etc. & are capable to integrate with various automation equipment.

Design & Engineering

Fatigue life of thermally stress relieved Press structure verified using Finite Element Analysis to ensure maximum rigidity for accurate stamping & enhanced die life.



Finite Element Analysis for hydraulic cylinder



Cylinder

Geometrical Accuracies

- Parts machined on high precision CNC machines for built-in Geometrical Accuracies which are sustained.
- Geometrical accuracies as per JIS B 6403 Grade -1.
- Extra long guides.



Waldrich Plano Miller



Zeiss Coordinate Measuring Machine

Reliability

- Hydraulic modules for accurate & safe motion control.
- Seamless hydraulic pipes with full penetrated & tested welded joints.
- Single action cylinders to avoid piston rings for high reliability & ease of maintenance.
- Use of reputed make bought out.

Safety

- Slide locking at TDC considering Operator Safety
- Hydraulic Safety System with Redundant Design
- Interlocks for Filter Clogging, Oil Temperature, Oil Level etc.
- Control Voltage 110V AC & 24V DC for operation safety
- Design of Electrical, Hydraulic & Mechanical System as per IEC & ISO standards
- On demand Presses conforming to CE/International Safety norms
- Under/Over Voltage & Single Phase Protection System
- Emergency stop buttons
- Safety blocks for safety of operator & maintenance staff
- Two Hand Run Button Station
- Blanking Dampers (On Demand) reduce Noise, Vibration and protects the Press against snap through load thereby Increase Die Life

Blanking Dampers



User Friendly Layout

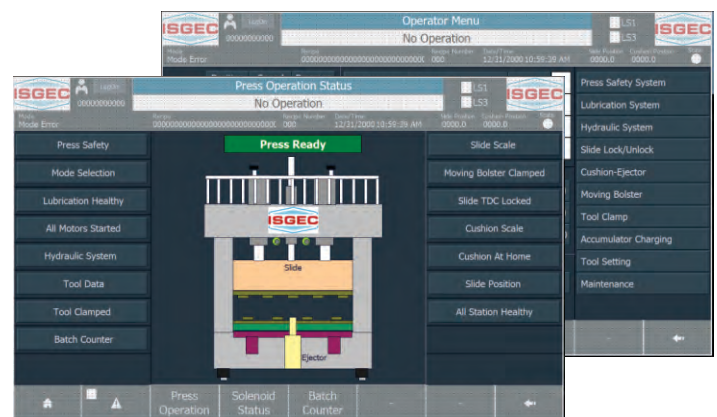
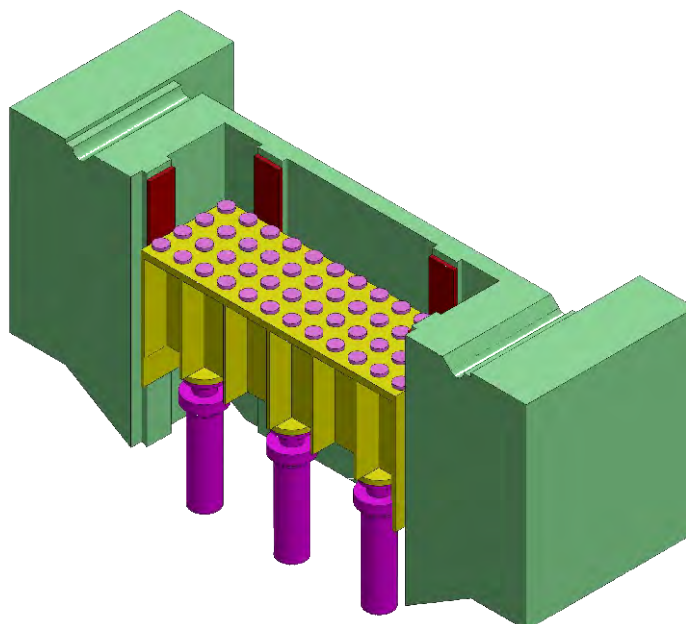
- In line with total productive maintenance (TPM) approach
- Enlarged platform
- Well clamped & isolated from vibration pipes and junction boxes
- Low height of press

High Uptime

- In line with Total Productive Maintenance (TPM) approach, Enlarged Platform, well Clamped & Isolated from Pipes and Junction Boxes etc.
- Single Action Cylinders for ease of Maintenance & High Reliability.
- Seamless Hydraulic Piping with full Penetration & duly Tested Welding Joints .
- Use of reputed make bought out with easy availability.

Ease of Operation

Programmable Logic Controller with User Friendly Operator Interface through Ergonomically designed operator Screens. HMI (Human Machine Interface) screens with Diagnostic feature developed by constant improvements through feedback from Press users.



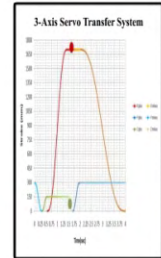
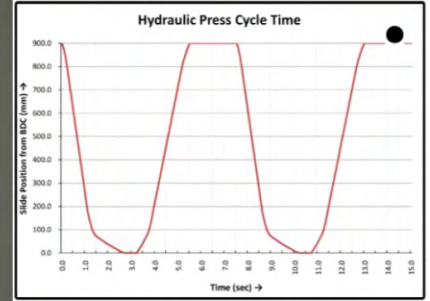
Die Cushion & Ejector - Optional

- Hydraulic operated die cushion for better part quality.
- Cushion Pin Layout as per JIS, JIC & DIN depending upon customer requirement.

High Speed Hydraulic Press Line with Transfer System



Cycle Time: 7.5 Sec
Throughput: 8 ppm





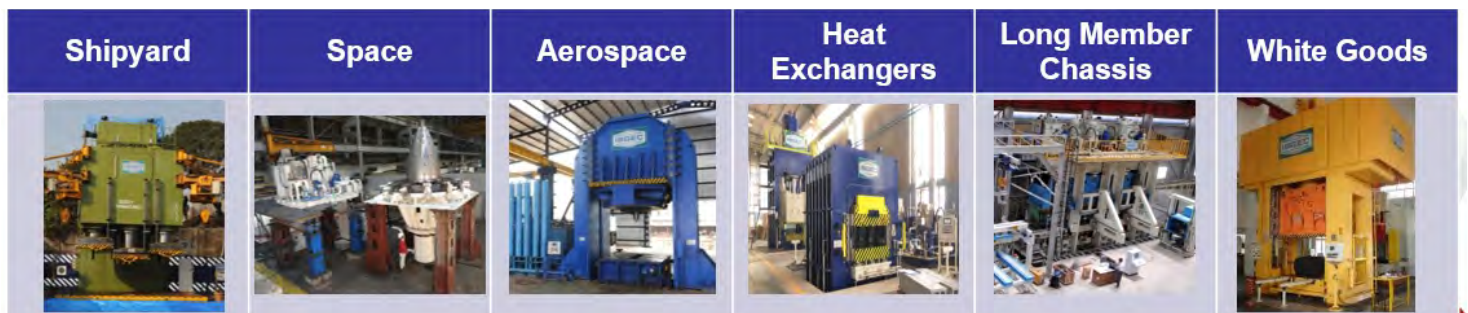
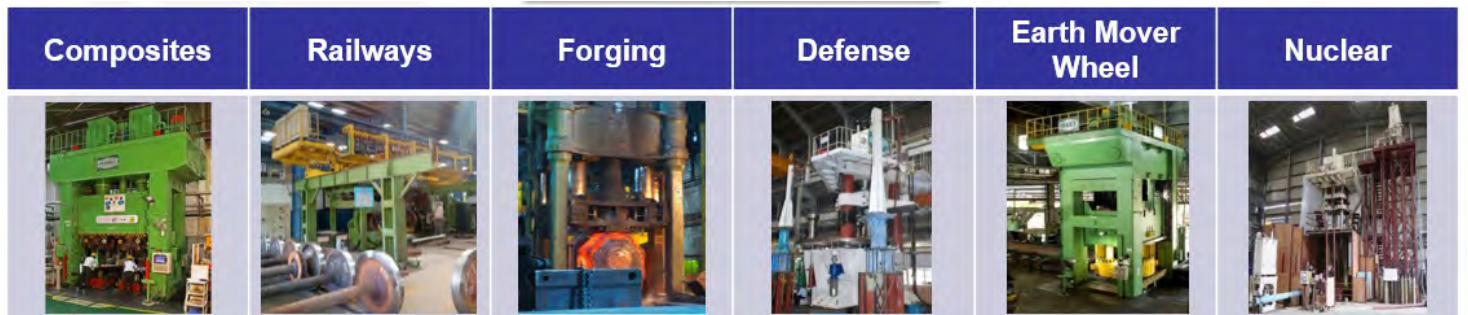
Technical Specifications

	Unit	250T	315T	400T	500T	630T	800T	1000T	1250T	1600T	2000T	2500T
Capacity*	kN	2500	3150	4000	5000	6300	8000	10000	12500	16000	20000	25000
Daylight	mm	1000	1200	1400	1400 1600	1600	1600	1800	2000	2000	2000	2000
Stroke of Main Slide	mm	700	800	900	900	1000	1000	1000	1200	1500	1500	1500
Bolster Size - LR X FB (Alt 1)	mm	1600 x 1000	2200 x 1600	2200 x 1600	3100 x 1900	3100 x 1900	3400 x 2200	3400 x 2200	4000 x 2200	4500 x 2500	4500 x 2500	4500 x 2500
Bolster Size - LR X FB (Alt 2)	mm	1600 x 1300	2500 x 1600	2500 x 1600	3400 x 2200	3400 x 2200	3700 x 2200	3700 x 2200	4500 x 2500	5000 x 3000	5000 x 3000	5000 x 3000
Slide Size - LR X FB (Alt 1)	mm	1450 x 1000	2050 x 1450/1600	2050 x 1450/1600	2950 x 1750/1900	2950 x 1750/1900	3250 x 2050/2200	3250 x 2050/2200	4000 x 2200	4500 x 2500	4500 x 2500	4500 x 2500
Slide Size - LR X FB (Alt 2)	mm	1450 x 1150/1300	2350 x 1450/1600	2350 x 1450/1600	3250 x 2050/2200	3250 x 2050/2200	3550 x 2050/2200	3550 x 2050/2200	4300 x 2500	5000 x 3000	5000 x 3000	5000 x 3000
Fast Approach**	mm/s	400	400	400	400	400	400	400	400	400	400	400
Fixed Pressing Speed***	mm/s	15	10/15	12/15	10/12/20	10/15	12/15/25	20	15	15	15	15
Return Speed with Fixed Pressing Speed	mm/s	180	180/150	140/185	110/145/215	115/170	130/180/250	250	150	150	150	150
Main Motor Power	kW	22.5	22.5/37	37/55	37/55/75	55/75	75/110/160	160	200	132 x 2	160 x 2	200 x 2
Cushion Force Option	kN	1000	1250	1600	2000	2500	3150	3150	3150	3150	4000	5000
Cushion Stroke	mm	250	300	300	300	400	400	400	400	400	400	400
Cushion Table Size - LR x FB (Alt 1)	mm	1150 x 550	1750 x 1150	1750 x 1150	2650 x 1450	2650 x 1450	2950 x 1750	2950 x 1750	3550 x 1750	3850 x 2050	3850 x 2050	3850 x 2050
Cushion Table Size - LR x FB (Alt 2)	mm	1150 x 850	2050 x 1150	2050 x 1150	2950 x 1750	2950 x 1750	3250 x 1750	3250 x 1750	3850 x 2050	4150 x 2350	4150 x 2350	4150 x 2350

* Customised solutions upto 15000T also available

** Higher Speed options available.

*** Pressing Speeds specifically suitable for Cycle Time & Applications can be provided.



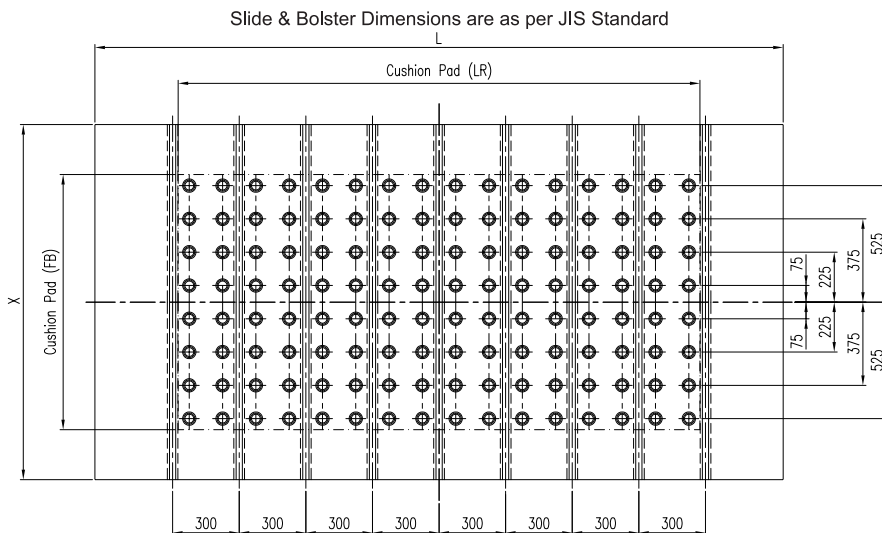
Standard Accessories

- Oil Filtering & Magnetic Particle Capturing (Built in Circuit)
- Oil Cooling (Water Cooled Heat Exchanger)
- Safety Blocks
- HMI including Self Diagnostic
- Slide Locking at Top Dead Center
- Two Hand Operation Stand
- Main Operator Panel
- Oil Lubrication
- Programmable Logic Controller
- Photo-Electrical Safety Guard

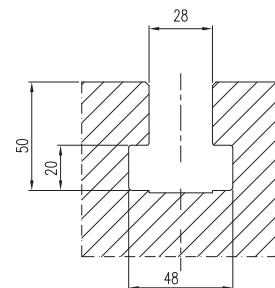
Optional Accessories

- Servo Hydraulic
- Oil Cooling through Water Chiller Unit
- Forced Air Cooling System for Oil Cooling
- Hydraulic Dampers for Cutting Loads
- Additional Two Hand Operation Stand
- Interfacing with Robotic/Transfer Systems
- Proportional Hydraulic Controls
- Stepless Slide Locking Device
- Die Cushion & Ejector
- Quick Die Change System
- Variable Pressing Speeds
- Feeding & Coil Handling Systems
- Moving Bolster
- Programmable NC Die Cushion
- Die Space details as per JIS, DIN, JIC & Customer Specifications
- REACH 4.0 Enable Smart Control

Bolster T-Slot Details



T-Slot Size as per T-28 of ISO Standard



T-Slots, Cushion Pin Layout as per JIS, JIC & DIN can be given as per customer requirement on demand.

Wide Range of Presses

Tandem Press Lines • Transfer Press Lines • Progressive Die Press Lines • Blanking Press Lines • High-Speed Mechanical Presses
 Deep Draw Hydraulic Presses • High-Speed Hydraulic Presses • Hot Forming Press Lines • Tryout Mechanical Presses
 Die Spotting/Tryout Hydraulic Presses • Refractory Press Solutions • Hot/Cold Forging Presses • Special Application Presses



www.isgtec.com



Follow us on:



Sales Offices & Plants : **Isgec Heavy Engineering Ltd.**
 Yamunanagar - 135 001 (Haryana) India
 Tel.: +91-1732-661 104, 661 140
 E-mail: presses@isgtec.com

Bawal - 123 501 (Haryana) India
 Tel.: +91-1284-302160
 E-mail: smpbawal@isgtec.com

Eagle Press & Equipment Co. Ltd.
 Windsor (Ontario) Canada

Regional Offices : Ahmedabad • Bengaluru • Chennai • Gurgaon • Mumbai • Noida • Pune

Overseas Offices : Chonburi, Thailand • Ontario, Canada • Tennessee, USA

Corporate Office : Isgec Heavy Engineering Ltd.
 A-4, Sector 24, Noida - 201 301, India
 Tel.: +91-120-408 50 01 / 02

Sales Representatives: Brazil • China • France • Germany • Hungary • Indonesia • Italy • Japan
 Malaysia • Mexico • Poland • Russia • South Africa • Spain • Thailand
 Turkey • USA • Vietnam

Some of the accessories / fitments shown in the reference photograph may not be part of Standard equipment supplied.
 Isgec reserves the right to change specifications without prior notice.
 Details given in this Brochure are indicative & may change.