



U. P. STEELS  
CASTINGS

# International Quality Castings

JOB BING FOUNDRY

CREEP RESISTANT STEELS

STAINLESS STEELS

ALLOY & CARBON STEELS

ALLOY & NODULAR IRONS

Ni-Cr BASED SUPERALLOY STEELS



Engineering for Excellence



The Isgec Corporate Office at Noida, a suburb of New Delhi, India

- A unit of **Isgec Heavy Engineering Ltd.**, a multi-product, multi-location public company that has been providing engineering solutions to customers around the world for the past 90 years. It ranks 329 in the ET 500 listing, and 280 in the Fortune India 500 listing.
- Foundry approved by Lloyd's Register of Shipping, London
- ISO-9001:2015 Certification by Lloyd's Register, Asia
- PED Certification by Lloyd's Register, Asia
- Qualified Creep Rupture Test for 10,000 hrs.
- Other Business Units of the Company are:  
Process Equipment, EPC Power Plants, Boilers, Sugar Plants & Distilleries, Presses and Contract Manufacturing
- IBR Certification as well known Foundry

## A Few Prestigious Customers

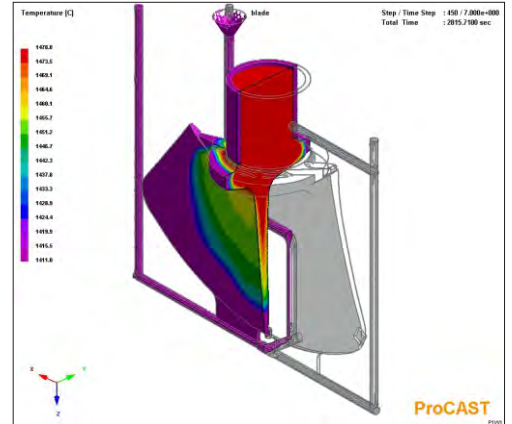
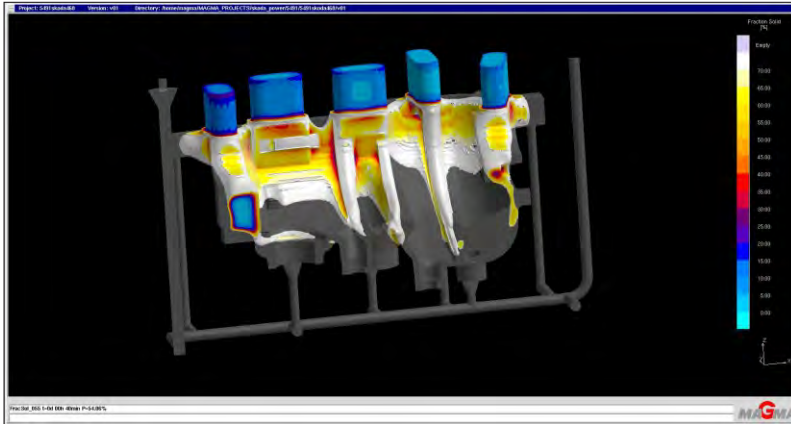
- SIEMENS
- GE ENERGY
- DOOSAN-SKODA
- BHEL
- ANDRITZ HYDRO
- VOITH
- L&T MHI
- KADANT CARMANAH
- TOSHIBA
- MHI
- MAN DIESEL & TURBO
- ANDRITZ PULP & PAPER
- BEML
- EMERSON - VIRGO
- SIEMENS DRESSER RAND
- ABB
- PERAR
- ENERGO-PRO
- NORCAN
- TB HYDRO
- ARMACON
- LOESCHE
- OMB
- HUMBOLDT WEDAG
- THYSSENKRUPP
- METSO
- VELAN

## GLOBAL REACH CUSTOMERS AROUND THE WORLD



## Technology

- Flow & Thermal Analysis / Simulation using MAGMASOFT & PROCAST



## Quality

- 37 Channel Spectrometer with Nitrogen Analysis
- Gas Analyser for Oxygen, Hydrogen & Nitrogen
- Ultrasonic Testing
- Magnetic Particle Test
- Dye Penetrant Test
- Radiography up to 160mm (Iridium & Cobalt source)
- Theodolite System - for Non-Contact Profile Measurements
- Qualified NDT Personnel (Level II & III)
- Pressure Testing

*Metallurgical Microscope*



*Ultrasonic testing area*



*Gas Analyser*



*Radiography (Cobalt Source) facility*



*Spectrometer*



*Profile measuring using Theodolite System*



## STEAM TURBINE CASTINGS

**Capacity** : 50 MT  
(single piece supplied weight)

- Major Customers** :
- Siemens
  - BHEL
  - GE Energy
  - Doosan-Skoda
  - Toshiba
  - Ansaldo
  - L&T MHI
  - Fincantieri
  - Triveni
  - MAN Energy
  - MHPS (Gas Turbine)

Creep Rupture  
Test Certificates



IV & CV Casing



Inner Casing



Outer Casing



660 MW Outer Casing



Barrel Casing



Outer Casing



## HYDRO TURBINE CASTINGS

**Capacity** : 40 MT

(single piece supplied weight)

**Major Customers** :

- Alstom
- BHEL
- Andritz
- GE Hydro
- Voith
- IMPSA
- NORCAN
- Aerodyn
- FLOVEL
- TB HYDRO
- LITOSTROJ

*Runner Crown*



*Runner Band*



*Wicket Gate*



*Francis Runner Blade*



*Pelton Runner*



*Francis Runner*



*Guide Vane Carrier*



*Francis Runner*



## VALVE CASTINGS

**Capacity**  
(single piece supplied weight)

: 60 MT

**Major Customers:** • BHEL  
• Adams

• R&D Multiples  
• L&T Valves

• Armacon



Valve Body



Valve Body



Valve Body



Valve Body



Valve Body



Valve Body

## PUMP CASTINGS

**Capacity**  
(single piece supplied weight)

: 50 MT

**Major Customers:** • Xylem  
• Torishima

• Kirlosakar  
• Weir

• BHEL



Impeller



Impeller



Pump Casing

## GENERAL CASTINGS

**Capacity**  
(single piece supplied weight)

: 60 MT

**Major Customers:** • Kadant Carmanah • Danieli • JSL  
• Andritz Pulp & Paper • METSO  
• L&T MHPS • JOHN COCKERILL



Grinding Table



Mill Head



Coiler Drum



Press Bed

## Capabilities

|                       |                          |
|-----------------------|--------------------------|
| Capacity              | 800 MT/Month             |
| Weight Range          | up to 60 MT single piece |
| Maximum Size          | 8 M x 8 M x 4 M          |
| Area under Crane      | 46000 Sq.M               |
| EOT Cranes            | 30 Nos.                  |
| Max. Lifting Capacity | 160 MT                   |

## Melting & Refining

|                   |                   |
|-------------------|-------------------|
| Arc Furnace       | 11 MT             |
| Induction Furnace | 2 x 11 MT         |
| AOD Furnace       | 16 MT             |
| LRF Furnace       | 2 x 40 MT & 25 MT |
| VD/VOD Furnace    | 40 MT             |

## Moulding

|  |                     |
|--|---------------------|
| Continuous Sand Mixer                                | 30 MT / Hr. - 2 No. |
| Continuous Sand Mixer                                | 5 MT / Hr. - 1 No.  |
| Sand Reclamation Unit                                | 8 MT / Hr. - 2 Nos. |
| Sand Systems - Alphasbet, Phenolic & Sodium Silicate |                     |

## Pattern Making

CNC machine & manual process

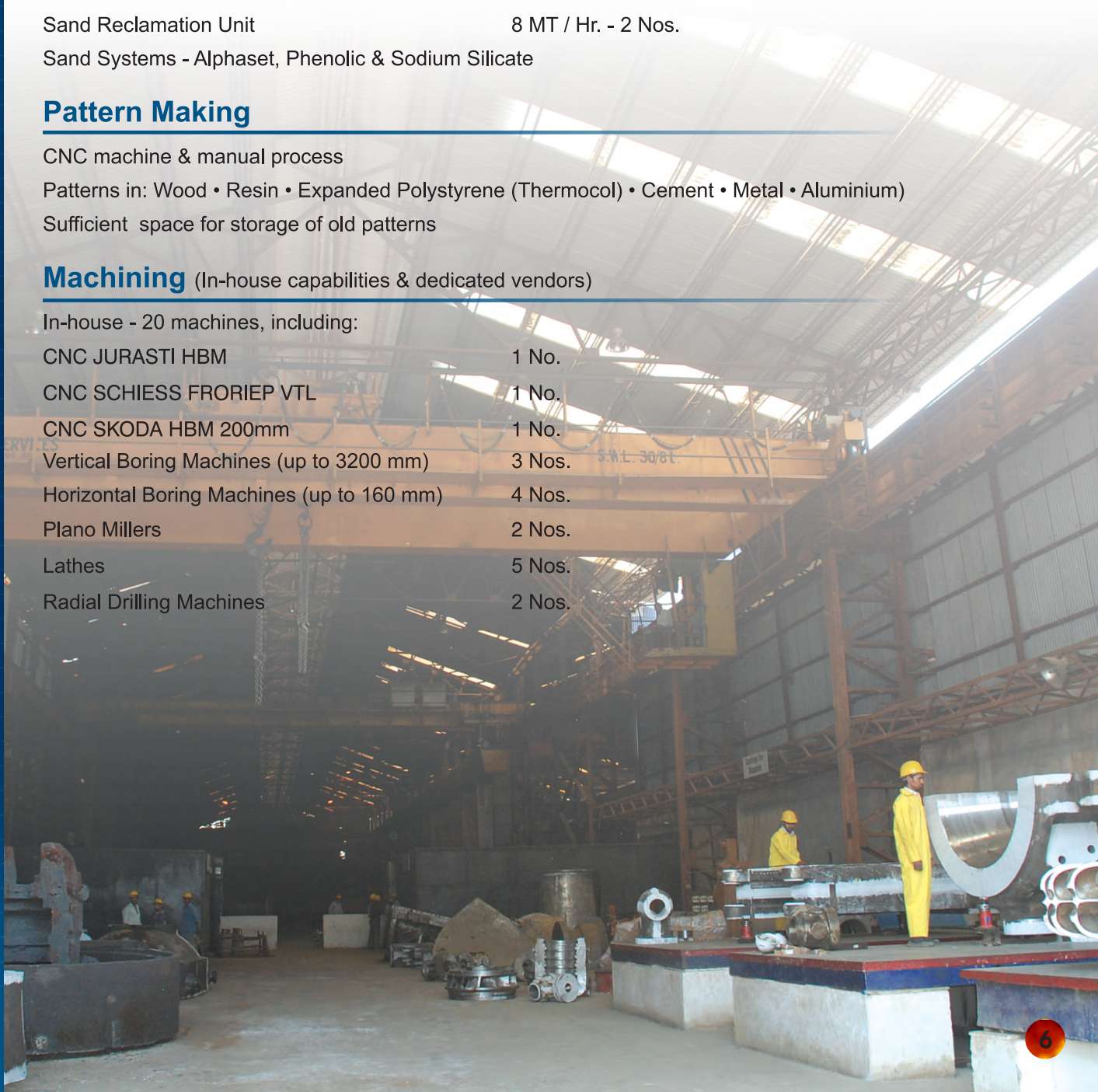
Patterns in: Wood • Resin • Expanded Polystyrene (Thermocol) • Cement • Metal • Aluminium)

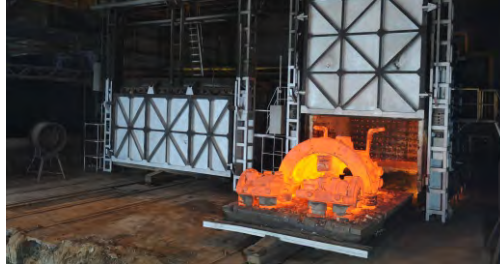
Sufficient space for storage of old patterns

## Machining (In-house capabilities & dedicated vendors)

In-house - 20 machines, including:

|   |        |
|---|--------|
| CNC JURASTI HBM                           | 1 No.  |
| CNC SCHIESS FRORIEP VTL                   | 1 No.  |
| CNC SKODA HBM 200mm                       | 1 No.  |
| Vertical Boring Machines (up to 3200 mm)  | 3 Nos. |
| Horizontal Boring Machines (up to 160 mm) | 4 Nos. |
| Plano Millers                             | 2 Nos. |
| Lathes                                    | 5 Nos. |
| Radial Drilling Machines                  | 2 Nos. |





**OTHER OFFERINGS  
BY  
ISGEC HEAVY  
ENGINEERING LTD.**

**MANUFACTURING**

**Presses • Process Equipment • Castings • Boiler Manufacturing & Piping • Liquefied Gas Containers • Contract Manufacturing • Skids**



Hydraulic & Mechanical Presses



Critical Process Equipments



Castings for Steel Plants



Boiler Pressure Parts



Piping Spools



Skids & Modules



Liquefied Gas Containers



Tantalum Bayonet Exchanger

**ENGINEERING, PROCUREMENT & CONSTRUCTION**

**Boilers • Sugar Plants & Distilleries • Power Projects • Air Pollution Control Equipment & Projects • Industrial Waste Water Treatment Projects  
Bulk Material Handling Equipment & Projects • Civil Construction including Factories**



Industrial Boilers



Sugar Plants & Machinery



Distilleries



Captive Power Plants



Bulk Material Handling



Electrostatic Precipitators (ESP)



**U. P. STEELS  
CASTINGS**

**Sales Office & Plant  
Isgec Heavy Engineering Ltd.**

Nara, Meerut Road, Muzaffarnagar - 251 203 (U.P.) India  
Mobile: +91-99977 77791, +91-74550 30319 Fax: +91-1396-25 23 24  
E-mail: marketing@isgec.in, info@isgec.in

**Corporate Office**

A-4, Sector 24, Noida (U.P.) India

**Branch Offices**

Mumbai, Chennai, Pune, Kolkata

[www.isgec.com](http://www.isgec.com)