



P R E S E N T S

IBM 5500



Home Markets Stocks **Stocks** IPOs/FPOs Markets Data Market Moguls Expert View Technicals Commodities Forex Mobile Apps More

Dons of Dalal Street News Live Blog Recos Earnings Podcast Market Paathshala Announcements Market Calendar Stock Price Quotes

Business News > Markets > Stocks Search for News, Stock Quotes & NAV's

11:55 AM | 26 SEP LIVE **MARKET STATS** **संसेक्स** 36,479 ▼ -172.72 **निफ्टी 50** 11,027 ▼ -39.90 **सोना (एमसीएक्स) (2/10 ...)** 30,795.00 ▼ -24.00 **यूएसडॉ/भारतीय ...** 72.74 ▲ 0.04 **पोर्टफोलियो बनाएं** **ई-टी मार्केट एप डाउनलोड करें** CHOOSE LANGUAGE HIN LIVE TV

Aadhaar verdict live SC declares Aadhaar scheme as constitutionally valid

ET 500 COMPANIES 2017
As on 11:56 AM | 26 Sep 2018

01 Online Application 02 Drip's Assessment 03 Submit Invoices
DRIP/c
SIMPLIFIED TRADE FINANCE

View the ET 500 companies List with key parameters. Notes: 1) Companies with market capitalization of more than Rs.100 crores are ranked based on total income (or revenue) in FY17 & annual reports released before Sep 30. Financial results for periods other than 12 months are annualized. 2) Companies traded on less than 75% of the total traded days on the BSE during the period from April 2017 to October 2017 are excluded. 3) Revenue, Profit After Tax (PAT), and Market Capitalization numbers are sourced from ETIG Database. 4) Total Assets, Return on Capital Employed (RoCE), and Return on Assets (RoA) are sourced from Capitaline 5) Market Capitalization is the average for October 2017. 6) Consolidated financials are considered wherever available. 7) 'LP' means loss in FY16, profit in FY17. 'PL' means profit in FY16, loss in FY17. 'LL' means loss in both years. 8) Trading companies show marked difference in sales and profits due to the nature of their business.

Market Stats

- Equities
 - Live Stats
 - Live Analysis
 - Live Announcements
 - ET 500 Companies
 - 2017**
 - 2016
 - 2015
 - 2014
 - 2013
 - 2012
 - 2011
 - 2010
 - 2009
 - Corporate Actions
 - Corporate Information
 - Shareholding
 - Institutional Activities
- Technical Screener
- Indices
- Sector/Industry
- Commodities
- Mutual Funds
- NPS
- ETF
- Listed Bonds

Dashboard 276-300 of 500

276	297	Future Lifestyle Fashions Ltd.	4112.23	17.46	45.67	54.97	6643.89
277	270	Colgate-Palmolive (India) Ltd.	4021.63	2.92	577.43	-0.64	29087.88
278	230	Kesoram Industries Ltd.	4013.31	-19.30	-124.13	PL	1631.96
279	250	ISGEC Heavy Engineering Ltd.	4010.41	-12.56	242.09	31.04	4654.55
280	291	The Ramco Cements Ltd.	4006.56	9.55	662.74	21.55	16542.42
281	317	Vakrangee Ltd.	4005.75	25.32	530.80	34.43	27626.34
282	271	Usha Martin Ltd.	4001.85	-3.45	-358.91	LL	800.45
283	N.A.	National Steel and Agro Industries Ltd.	3995.44	5.47	20.62	-26.72	172.34
284	476	Crompton Greaves Consumer Electricals Ltd.	3995.40	120.07	290.69	176.35	13572.43
285	296	Balkrishna Industries Ltd.	3980.66	16.63	716.85	60.83	16336.03
286	273	Binani Industries Ltd.	3958.25	-3.57	-460.92	LL	242.69
287	419	Aegis Logistics Ltd.	3938.02	77.26	120.26	6.11	7677.83
288	N.A.	Sakuma Exports Ltd.	3926.58	25.09	37.09	14.97	295.16
289	290	Indraprastha Gas Ltd.	3923.23	4.22	606.34	32.42	21422.17
290	259	Bombay Rayon Fashions Ltd.	3917.09	-9.18	-162.28	PL	3661.83
291	N.A.	PNB Housing Finance Ltd.	3907.85	44.81	523.73	60.42	24558.53
292	N.A.	Varun Beverages Ltd.	3886.79	12.94	151.26	33.81	9192.74
293	229	HCL Infosystems Ltd.	3883.21	-23.26	-247.67	LL	1100.02
294	281	Shilpi Cable Technologies Ltd.	3840.49	-1.52	-834.34	PL	211.91
295	307	Hinduja Global Solutions Ltd.	3733.76	11.54	179.55	77.98	1192.09
296	316	Cyient Ltd.	3691.30	14.81	343.80	5.62	6047.09
297	246	IFCI Ltd.	3681.29	-20.55	-377.53	PL	3870.06
298	310	Strides Pharma Science Ltd.	3664.66	23.94	399.75	268.37	7663.75
299	305	City Union Bank Ltd.	3657.74	9.05	502.77	13.06	10629.11
300	294	Mahanagar Telephone Nigam Ltd.	3655.38	-3.59	-2936.05	LL	1271.81

FORTUNE

SPECIAL ISSUE

DEC. 2017-MARCH 2018
FORTUNEINDIA.COM

INDIA



PRICE ₹ 100



INDIA'S LARGEST CORPORATIONS

THE CHINA 500 + THE BRIC & CIVETS 100

Filter
Search

1. Indian Oil Corporation
2. Reliance Industries
3. State Bank of India
4. Tata Motors
5. Rajesh Exports
6. Bharat Petroleum
7. Hindustan Petroleum
8. Oil & Natural Gas Corp
9. Coal India
10. Tata Consultancy Services
11. Tata Steel
12. ICICI Bank
13. Larsen & Toubro
14. Hindalco Industries
15. Bharti Airtel
16. HDFC Bank
17. Mahindra & Mahindra
18. NTPC

Reset
Apply

280

ISGEC HEAVY ENGINEERING



Industry : Capital Goods

Incorporation Year : 1901

Parameters	Rs. Crore	% Change
Revenue	4,109.24	-12.02
Net Operating Income	3,916.79	-13.15
Profit	242.09	31.04
Assets	1,894.56	-5.96
Net Worth	1,253.64	21.85
Equity Dividend	13.28	
Employee Cost	327.25	7.94

Profit Ratios		
Revenue	Assets	Net Worth
4,109.24	1,894.56	1,253.64

Business Today

Special
Issue

TCS
remains
No 1 - just
about
pg 54



HDFC joins
the big
boys
pg 76

Maruti
powers its
way to top 10
pg 80

www.businesstoday.in | December 12, 2017 | ₹100



BT



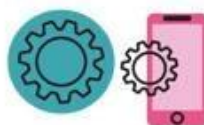
INDIA'S MOST VALUABLE COMPANIES

TOTAL ASSETS RANK	COMPANY	2016/17	2015/16	Growth %	BT 1000 Rank 2017
201	Godrej Industries	4,875	4,710	3.5	123
202	GSK Consumer Healthcare	4,832	6,586	(26.6)	105
203	Varun Beverages #	4,785	4,142	15.5	220
204	State Trading Corp of India **	4,775	4,586	4.1	745
205	OCL India	4,754	4,320	10.1	287
206	Deepak Fertilisers & Petrochem.	4,745	4,473	6.1	495
207	Hotel Leela Venture	4,739	4,963	(4.5)	730
208	Ballarpur Industries	4,683	4,918	(4.8)	657
209	Bombay Dyeing & Manufacturing	4,664	4,393	6.2	603
210	Oberoi Realty	4,659	4,593	1.4	170
211	Ceat	4,612	3,893	18.5	276
212	BEML	4,599	4,260	7.9	303
213	JK Lakshmi Cement	4,583	4,108	11.6	316
214	JBF Industries	4,536	4,269	6.3	534
215	Cox & Kings (India)	4,512	4,170	8.2	371
216	Thermax	4,492	4,587	(2.1)	187
217	Wockhardt	4,479	4,570	(2.0)	240
218	United Breweries	4,474	4,362	2.6	110
219	Mukand	4,460	5,917	(24.6)	724
220	Zuari Agro Chemicals	4,459	4,893	(8.9)	620
221	Gujarat Alkalies & Chemicals	4,437	3,895	13.9	442
222	Inox Wind	4,409	4,382	0.6	386
223	KSK Energy Ventures	4,401	4,282	2.8	898

TOTAL ASSETS RANK	COMPANY	2016/17	2015/16	Growth %	BT 1000 Rank 2017
251	Linde India #	3,823	3,664	4.3	407
252	Future Lifestyle Fashions	3,754	3,982	(5.7)	338
253	Britannia Industries	3,690	3,076	19.9	61
254	Hindusthan National Glass & Ind.	3,606	3,740	(3.6)	762
255	Kansai Nerolac Paints	3,597	3,211	12.0	112
256	JK Paper	3,594	3,486	3.1	610
257	DB Realty	3,585	3,552	0.9	723
258	Amara Raja Batteries	3,585	2,951	21.5	138
259	EIH	3,541	3,409	3.9	254
260	Raymond	3,506	3,391	3.4	363
261	Prakash Industries	3,503	3,362	4.2	676
262	Dhampur Sugar Mills	3,474	3,157	10.1	655
263	GHCL	3,468	2,908	19.2	481
264	Escorts	3,466	3,227	7.4	272
265	HT Media	3,455	3,232	6.9	532
266	ISGEC Heavy Engineering	3,446	3,499	(1.5)	356
267	Ashoka Buildcon	3,420	3,050	12.1	409
268	Gujarat Industries Power	3,414	3,148	8.5	584
269	Mindtree	3,395	3,164	7.3	225
270	KRBL	3,386	2,942	15.1	216
271	Kothari Products	3,380	3,581	(5.6)	915
272	E.I.D. Parry (India)	3,378	3,730	(9.4)	312
273	Phoenix Mills	3,377	3,325	1.5	268

BT500 INDIA'S MOST VALUABLE COMPANIES

THE LIST (201-300 / 500)



₹70,331 cr Reom assets, a fall of 3%, as the company struggles to pay off its huge debt

224	Redington (India)	4,391	3,897	12.7	325
225	Nagarjuna Fertilizers and Chem.	4,389	5,382	(18.4)	785
226	Jubilant Life Sciences	4,382	4,306	1.8	180
227	Tata Global Beverages	4,360	4,346	0.3	199
228	Sun TV Network	4,350	3,782	15.0	85
229	Bayer CropScience	4,290	3,737	14.8	139
230	IL&FS Eng. and Construction	4,259	3,720	14.5	881
231	GE Power India	4,243	4,122	2.9	370
232	Engineers India	4,210	4,000	5.3	193
233	Balrampur Chini Mills	4,180	3,760	11.2	401
234	TI Financial Holdings **	4,178	3,563	17.3	169
235	TV18 Broadcast	4,095	4,141	(1.1)	255
236	Indraprastha Gas	4,086	3,381	20.8	145
237	Peninsula Land	4,083	3,888	5.0	932
238	Gujarat Fluorochemicals	4,080	3,734	9.3	253
239	Uflex	4,080	3,557	14.7	487
240	Larsen & Toubro Infotech	4,069	2,735	48.8	168
241	Sadbhav Engineering	4,051	3,594	12.7	321
242	Prism Cement	4,026	4,269	(5.7)	310
243	Mahindra CIE Automotive #	4,013	2,772	44.8	223
244	Marico	3,975	3,581	11.0	68
245	Ipca Laboratories	3,968	3,905	1.6	258
246	Network 18 Media & Investment	3,964	3,571	11.0	337
247	Hubtown **	3,958	3,737	5.9	795
248	Colgate-Palmolive (India)	3,904	3,302	18.2	87
249	Gayatri Projects **	3,887	3,512	10.7	466
250	BASF India	3,881	3,777	2.8	291

274	India Glycols	3,363	3,478	(3.3)	940
275	McLeod Russel India	3,362	3,247	3.6	550
276	Diamond Power Infrastructure **	3,349	2,970	12.8	841
277	Aarti Industries	3,341	2,836	17.8	262
278	Apar Industries	3,300	2,777	18.8	459
279	Maharashtra Seamless	3,285	3,147	4.4	507
280	Pfizer	3,271	2,888	13.2	221
281	Nava Bharat Ventures	3,219	3,277	(1.8)	501
282	Jindal Poly Films	3,153	2,964	6.4	583
283	Shriram EPC	3,133	3,024	3.6	500
284	Hindustan Copper	3,121	2,714	15.0	279
285	Graphite India	3,109	2,998	3.7	465
286	HSIL	3,088	2,654	16.4	485
287	MOIL	3,073	3,728	(17.6)	336
288	Berger Paints India	3,052	2,512	21.5	99
289	Triveni Engineering & Industries	3,052	2,969	2.8	530
290	Bajaj Electricals	3,025	2,910	3.9	433
291	Mahindra Holidays & Resorts India	2,966	2,668	11.2	353
292	Finolex Industries	2,953	2,349	25.7	259
293	Glaxosmithkline Pharmaceuticals	2,930	2,970	(1.3)	106
294	Ramky Infrastructure	2,887	2,994	(3.6)	963
295	Sterlite Technologies	2,887	2,508	15.1	286
296	Orient Cement	2,884	2,896	(0.4)	431
297	Info Edge (India)	2,880	2,568	12.2	181
298	Whirlpool of India	2,860	2,251	27.1	152
299	AIA Engineering	2,834	2,431	16.6	163
300	JMC Projects (India)	2,797	2,662	5.1	753

For keys to symbols used and other notes, see footnotes on page 104; The list excludes BFSI companies; Standalone data; Source: CMIE Prowess & Ace Equity



Vol No 14

Issue No 11

FEBRUARY 2018

Business Digest



FICCI

500

India's Blue-chips, FICCI's Foremost



155	Wellknown Polyesters Limited	Anil Gupta	Mumbai	Textiles
156	KRBL Limited	Anil Kumar Mittal	Noida	Food Processing
157	Shoppers Stop Limited	C. L. Raheja	Mumbai	Retail
158	Dabur India Limited	Anand Burman	Ghaziabad	Health Care
159	Whirlpool of India Limited	Sunil D'Souza	Gurgaon	Electronics
160	National Buildings Construction Corporation Limited	Anoop Kumar Mittal	New Delhi	Real Estate
161	Isgec Heavy Engineering Ltd	Aditya Puri	Noida	Manufacturing
162	Sadbhav Engineering Limited	Vishnubhai M Patel	Ahmedabad	Infrastructure
163	Shirpur Gold Refinery Ltd	Amit Goenka	Mumbai	Gems & Jewellery
164	United Bank of India	Pawan Kumar Bajaj	Kolkata	Banking
165	Indo Rama Synthetics (I) Ltd	O. P. Lohia	Gurgaon	Textiles
166	Tata Global Beverages Limited	Ajoy Kumar Misra	Bangalore	Food Processing
167	Deutsche Bank AG	John Cryan	Gurgaon	Banking
168	Carborundum Universal Ltd	M. M. Murugappan	Chennai	Engineering
169	Navavua Engineering Company Ltd	C. V. Rao	New Delhi	Engineering