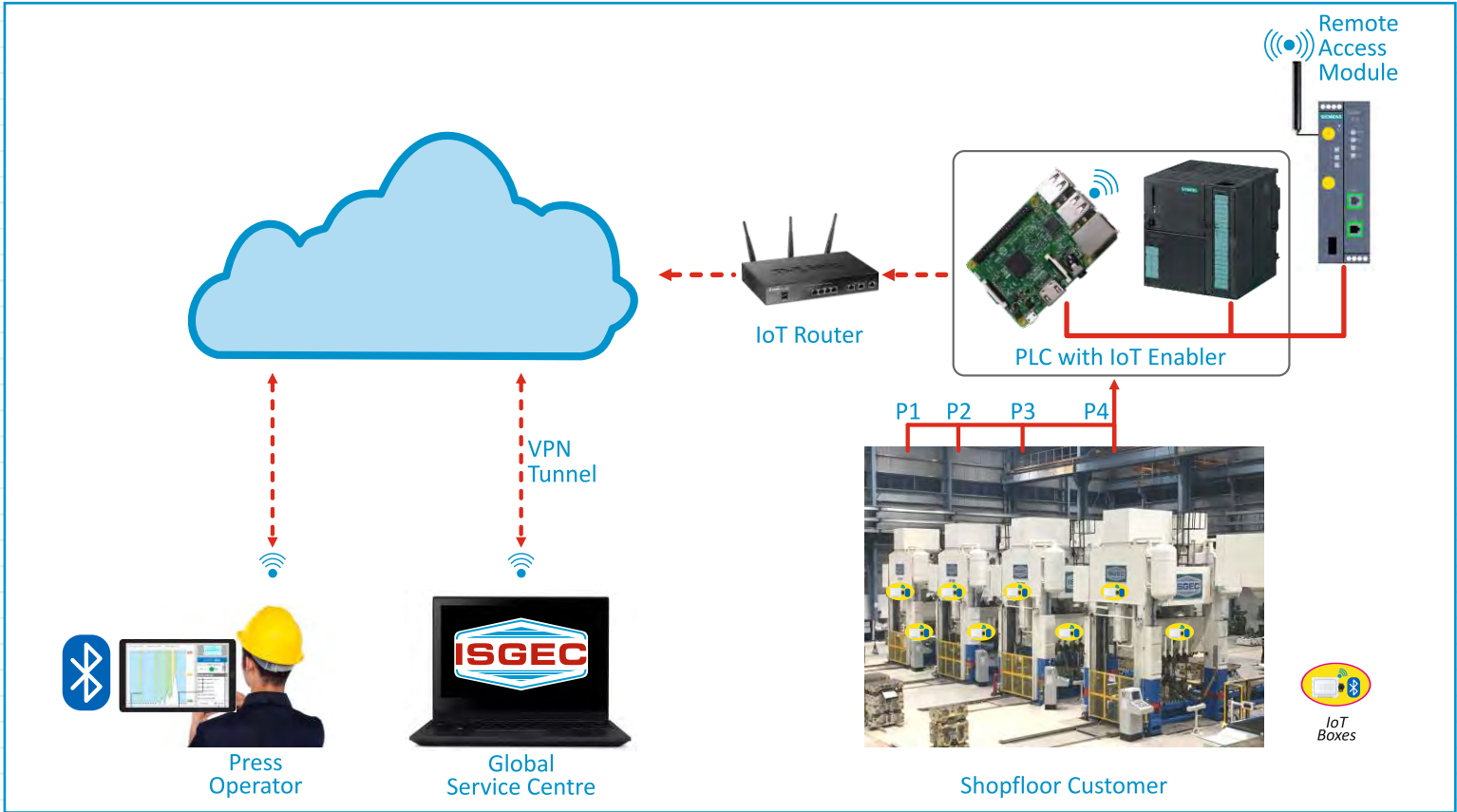


# ISGEC REACH 4.0

Remote Enabled Access & Cloud Hub

*Quantum Improvement in Quality, Productivity & Maintenance*

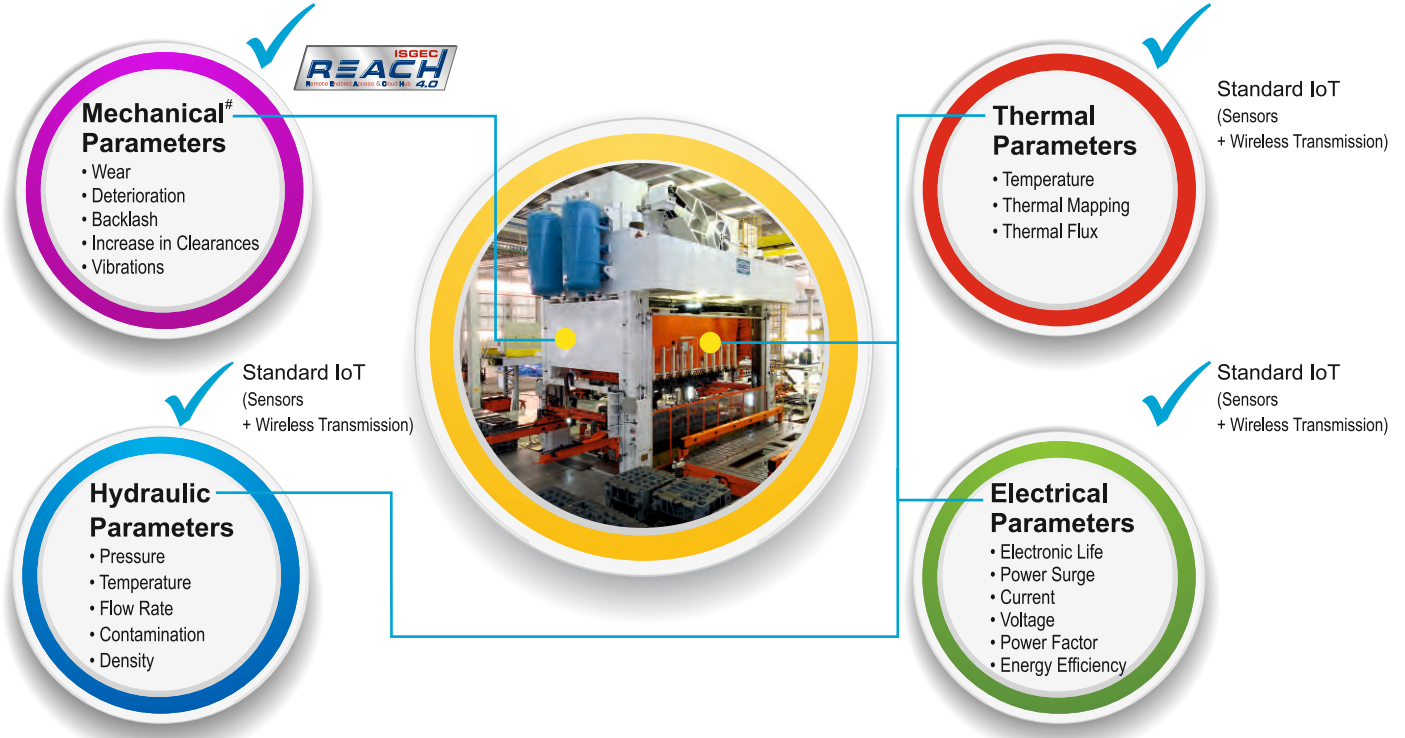


**High Accuracy • High Productivity • High Uptime**

## Why Isgec REACH ?

REACH ensures efficient and timely monitoring of all Mechanical Parameters.

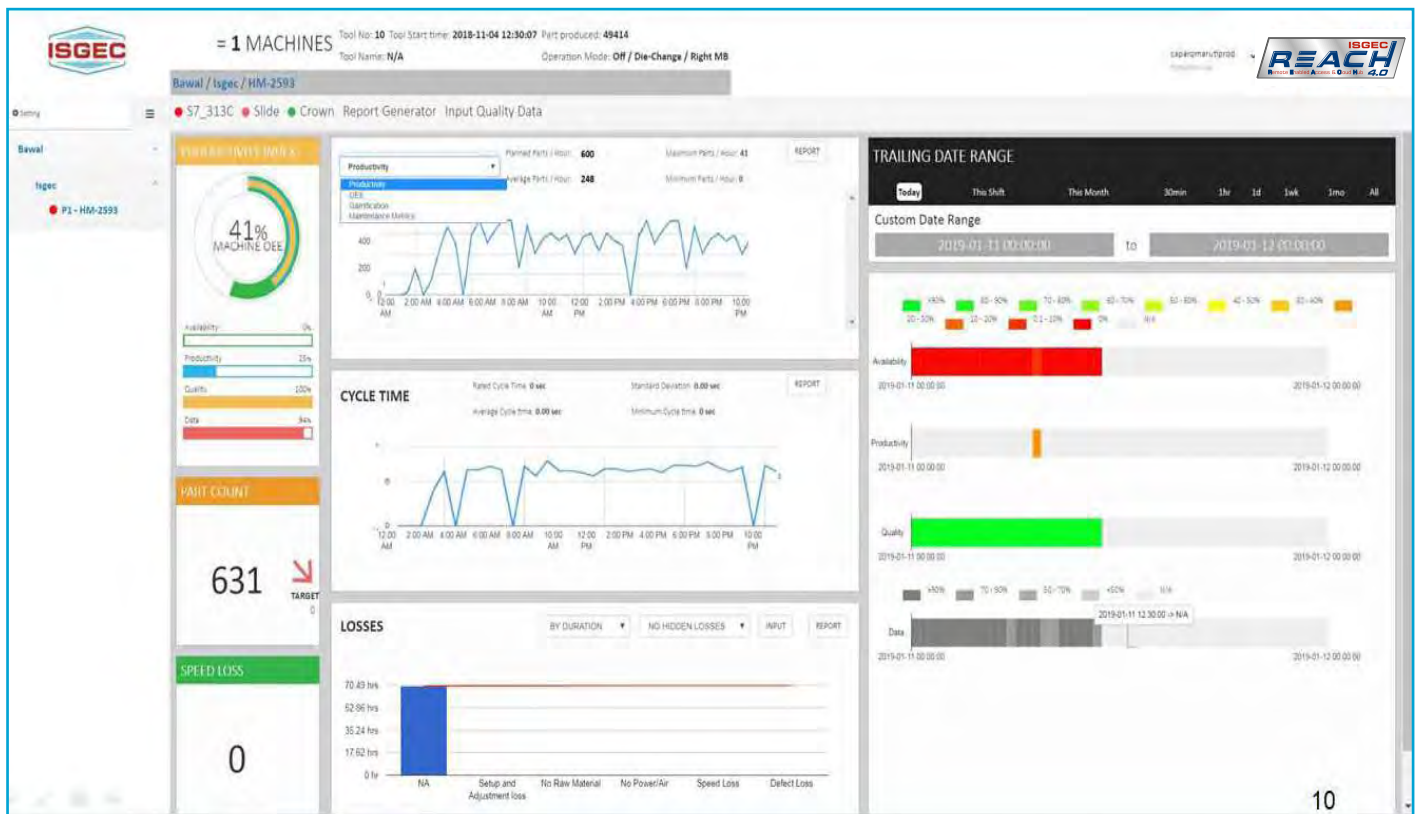
Very high frequency data • Difficult to decipher signal from noise • Bandwidth Limitations • Storage Limitations • Standard IoT does not work



# Optional

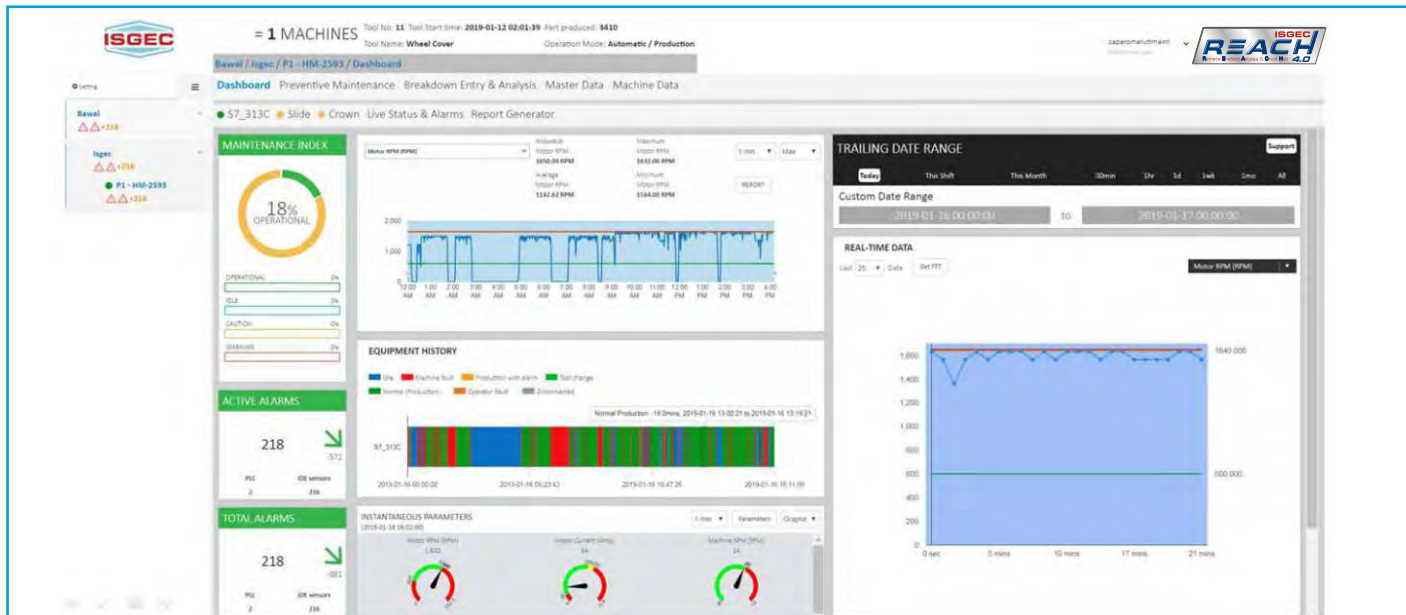
## Productivity Dashboard

- OEE
- Availability
- MTBF
- Total Production
- Productivity
- MTRR
- Quality



## Maintenance Dashboard

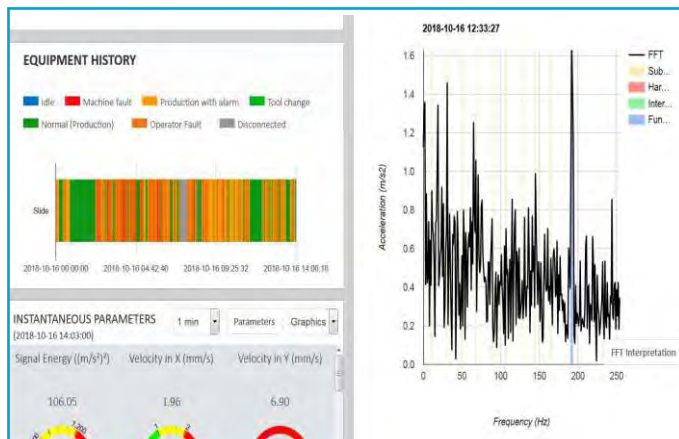
- Plant Uptime
- Active Alarm
- Alarm History
- Multiple Feature Selection



## Vibration Analysis (Optional)

### Predictive Maintenance:

- Predicting the failure of critical items through vibration analysis. FFT (Fast Fourier Transform) of velocity and acceleration in X,Y, Z directions.
- Isgec's AI to pinpoint the root cause.



## Pattern Recognition Using AI<sup>#</sup>

